



Transport Research Arena Europe 2010

3rd edition
Brussels, Belgium

7 - 10, June 2010



NETWORK OF NATIONAL RESEARCH PROGRAMS



Transport Research Arena Europe 2010

3rd edition
Brussels, Belgium

7 - 10, June 2010

Oliver Althoff



Projektträger für das



Bundesministerium
für Wirtschaft
und Technologie

ERA-NET TRANSPORT



- The ENT partners are the owners and managers of national transport research programmes - ministries and agencies
- The ENT services and structures support the ENT partners in trans-national cooperation
- ENT aims at sustainable improvements in transport research
 - Increase efficiency of funding
 - Improve quality of research
 - Establishment of new relationships between funding organisations

ERA-NET TRANSPORT

Geographic coverage 2010



ERA-NET TRANSPORT 2004 - 2008

- The first period was a testing phase for structures, procedures and tools
- 16 cooperation groups (thematic sub-groups)
- Not all of the groups ended in a joint funding action.
- But, each group provided experience and knowledge that were needed to further develop ENT



ERA-NET TRANSPORT 2004 -2008 Testing trans-national cooperation

- *SURSHIP*
 - *Intelligent Logistics*
 - *KEEP MOVING*
 - *Intermodal Freight Transport*
 - *Sleepiness at the wheel*
- 10 countries / programmes participated actively
- Total public R&D funding of 23 M Euro.



ERA-NET TRANSPORT

2008-2011 Exploiting the knowledge and experience

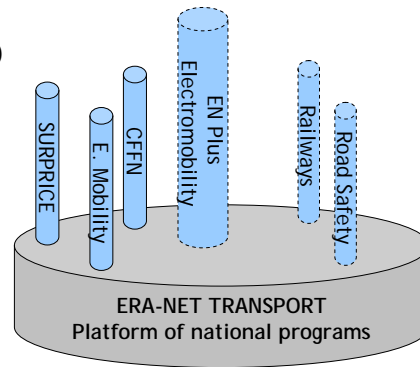


Recently launched funding initiatives and calls

- SURPRICE (ENT17)
- Electric mobility (ENT19)
- Climate-friendly freight network (ENT18)

Initiatives under preparation

- Electric mobility, call 2 (ENT 19 cont.)
- Road Safety (ENT 20)
- Railway Research (ENT 21)
- Capacity management
- *Electromobility (ENT Plus)*



SURPRICE

Sustainable mobility through Road User Charging



- 5 countries: DK, FI, FR, SE, CH
- Call was closed February 2010
- 9 proposals, total requested funds app. 2,4 M€
- 6 projects will be funded, app. 1,2 M€
- Next steps:
 - Summer 2010: Project start
 - Fall 2010 and ongoing:
 - SURPRICE "Bank of Knowledge"
 - Dissemination seminar



Electric Mobility

Quick wins

era-net
TRANSPORT
www.transport-era.net

Call 1
CLOSED

UPCOMING
Call 2

Closing 1st call: February 2010

- 5 countries: NL, NO, FI, PL, AT, Budget 250 k Euro
- Subjects
 - Potential markets for early adopters
 - National policies & Action plans for Electric Road Mobility
- Outcome: Handbook for the implementation of Electric Road Mobility (Dec '10)

Opening 2nd call: Summer 2010

- 4 countries: NL, NO, PL, AT, Budget: 1.4 M€
- Subjects
 - Criteria for loading systems in public/ private parking areas
 - Safety issues for electric (and hybrid) vehicles

More information

www.transport-era.net, Action Group ENT19

Climate-friendly Freight Network

era-net
TRANSPORT
www.transport-era.net

OPEN for
proposals

- Germany, Sweden, Austria, France published the funding initiative in Dec '09
- Common interest for trans-national projects based on running national programs and calls
- The initiative is not ending with a definite call closure date. It remains active until stopped by the involved countries
- Next cut-off date: 31 July 2010
- Guide for applicants:
www.transport-era.net, Action Group ENT18



Railway research

- 8 countries involved AT, CH, SE, UK, PL, FR, DE, NL
- Workshop of programme representatives, 29 Oct '09
- ENT Plenary Group, 01 Dec 09, exchange with ERRAC
- Identification of priority themes for cooperation
- Targeted workshop on a common priority topic could be organised in September



Road Safety

- 5 countries: DK, FR, PL, UK, SE (plus possibly FI)
- Clustering of research in two key areas
 1. **Economics of Road Safety**
 - Valuating indirect costs
 - Forecasting and modelling
 - Decision making tools
 2. **Vulnerable Road Users**
 - The elderly
 - Risk perception
 - Cyclist/motorcyclists (with a view to a possible joint call in 2011 or 2012)



Era-Net Plus Electromobility

A 2nd generation perspective - electromobility for 2025

UPCOMING
Call

- Proposed and led by France
- Presently 8 countries involved, further might follow (FR, DE, AT, NL, NO, FI, SE, PL)
- Comprehensive preparation process
- Expected call launch: October-November 2010
- Expected total budget: 20-30 M Euro

Five thematic key-dimensions

1. Energy and environmental approach
2. Usage patterns, economic models, actors
3. Technical dimensions of the recharge and distribution system
4. Testing, trials and normative standards
5. Applied technological research / Innovation



Era-Net Plus Electromobility

The instrument ERA-Net Plus

- Joint call of national programs
- Co-funded by the FP7 (Topping-up)
- FP7 provides up to 1/3 of the total budget
- Implementation by the national programs
- Usual national provisions for funding
- Expected funding for the Electromobility call
 - MS/AS up to 20 M Euro (2/3)
 - EC up to 10 M Euro (1/3)



ENT-rada

Transport Research Funding Programme and Community Information System



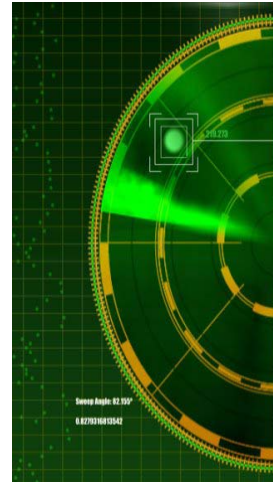
Content

- National Programs and agendas
- Contact persons
- Funding instruments

Objective

- Identify cooperation opportunities
- Improve exchange between programs
- Improve overview on national funding opportunities for European researchers

Open in Autumn 2010 → www.ent-rada.eu



ERA-NET TRANSPORT

Outlook



- ENT phase II will run until 2011
- ENT partners decided to continue → ENT phase III is under preparation
- Focus of ENT remains on the initiation and facilitation of cooperation
- ENT-rada is supposed to support the exchange between programs as well as researchers substantially

- ENT structures
 - Challenging thematic scope "Surface Transport"
 - Continued process towards
 - lean management structures and
 - decentralised operation in thematic sub networks (action groups)



ERA-NET TRANSPORT
Exploiting Europe's innovation potential



ENT aims at developing the ERA for transport

- Long-term and sustainable improvements
 - Increase efficiency of funding
 - Improve quality of research
 - Establishment of new relationships between funding organisations
- Safeguarding common national goals



European Research Area

Closer cooperation of the national programmes and the EC is needed

- ENT is reinforcing its link to EPTR and the Program Committee
- ENT has structures, procedures and tools to contribute to this process
- ENT is the platform that covers the full scope of surface transport
- ENT's thematic sub networks (action groups) enable targeted actions
- ENT is the platform to prepare new and comprehensive cooperation (EN Plus)



Thank you for your attention!

ERA-NET TRANSPORT
Coordination

c/o
TÜV Rheinland
Research Management
T +49 221 806 4253
info@transport-era.net
www.transport-era.net